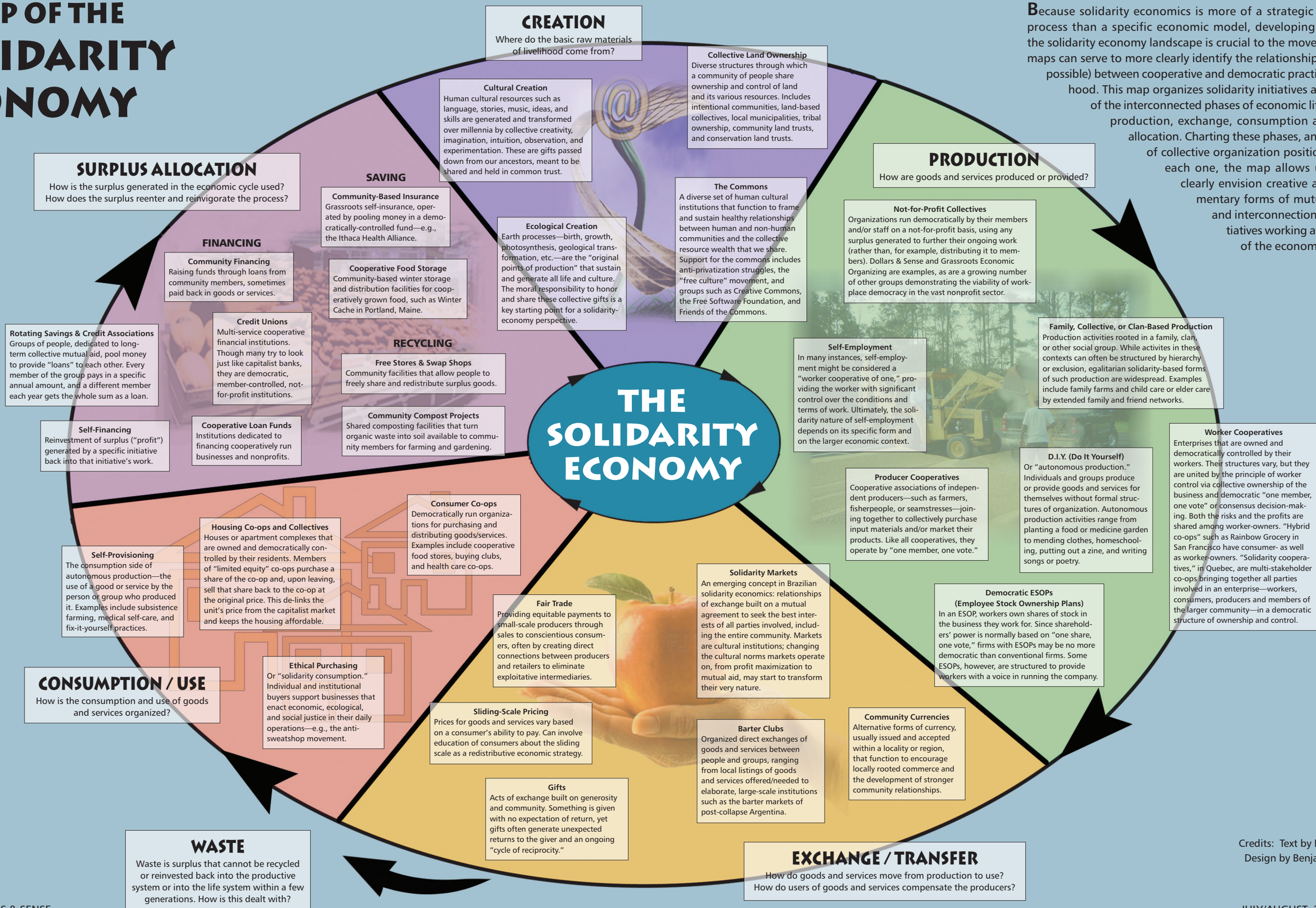


A MAP OF THE SOLIDARITY ECONOMY



Because solidarity economics is more of a strategic organizing process than a specific economic model, developing “maps” of the solidarity economy landscape is crucial to the movement. Such maps can serve to more clearly identify the relationships (actual or possible) between cooperative and democratic practices of livelihood. This map organizes solidarity initiatives around each of the interconnected phases of economic life: creation, production, exchange, consumption and surplus allocation. Charting these phases, and the forms of collective organization positioned within each one, the map allows us to more clearly envision creative and complimentary forms of mutual support and interconnection among initiatives working at each point of the economic cycle.

Credits: Text by Ethan Miller
Design by Benjamin Stroud